

# Excelsus Summer Bulletin

EXCELSUS GENETICS  
15 FEBRUARY 2010



Volume 9

Inside this Issue:

<b>Excelsus First Eleven Batsmen</b>	2
<b>Excelsus First Eleven Bowlers</b>	3
<b>Outstanding Genetics</b>	4
<b>Beef Breeding Machine</b>	6
<b>Engineering the Perfect Simbra</b>	7
<b>The Back Page</b>	8

## *Pine Ridge Calves Grace Excelsus*



The legend of Pine Ridge started over a cognac in the house of Otto and Karen Herrigel who on hearing of our intended trip to America informed us that Pine Ridge was one fine stud. Johan De Jager and I then had the privilege of meeting these fine people and seeing their lifetime's work with this fine stud. Bill and Jane must easily have the most uniform Simbra Stud around. After many conversation's, email and much effort from Bill and Jane to release some of their prize bulls to Africa. Excelsus is proud to introduce our first PRR crop to Africa and we are really chuffed about it being a genetic partner with Bill and Jane.

Bill and Jane started around twenty four years ago by defining their idea of a perfect simbra and have fanatically pursued their dream. The result is amazing and still more amazing is that we can tap into this program with just simple AI.

## *New Genetics Overflow at Excelsus Landgoed*

The Vaal Dam at 110%. The weather and rain has been fantastic with Zaaiplaats farm at over 700ml for the season so far. The same can be said about the last two years calf crops. Bulls such as the Americans, Platinum, Red Bullet, Patriot, Outlaw, Top Shelf, Pioneer and Prevail to name a few and then the Excelsus Young Guns such as Galen, Etch, Lanserac and Challis combined with the older stalwarts Enos and Langman have made for a heady mix of new and old lines. See our website for all the bulls and pictures of their progeny.



[www.excelsuslandgoed.co.za](http://www.excelsuslandgoed.co.za)

# Excelsus First Eleven; Batsmen



## HDL0633B Galen (Captain)



### Stats

B.M. +0.8  
200 +8  
400+ 7  
600 +10  
Milk +3

A fantastic bull to open heifers with, breeding top animals from a variety of dam lines. Galen's first calves are among the very best at Excelsus. A world class opening batsman and Excelsus genetic leader for 2010.

## LMC Patriot

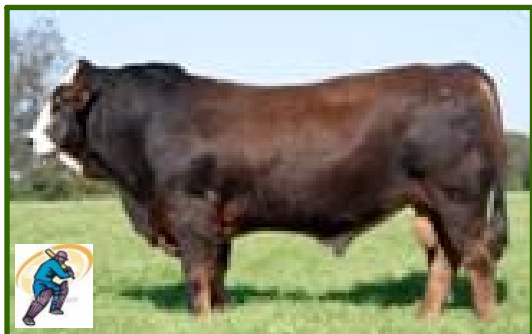


### Stats

B.M. +2.1  
WW+25.9  
YW+ 49.2  
MM +6.4  
MWW +19.4

Patriot has worked in all the herds that he has been used in. Look out for the Patriots at the National Champs 2010. No calving problems and good-looking progeny that makes this an ideal opener for your Genetic Team.

## PRR Prevail (HZG P)

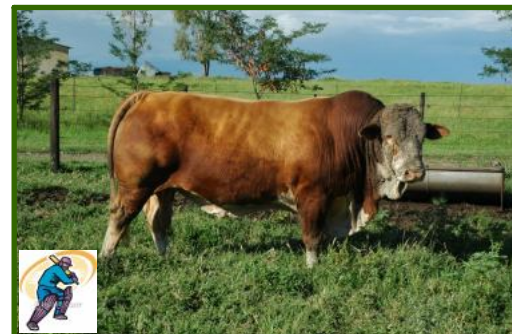


### Stats

B.M. +1.7  
WW+38.1  
YW+ 64.2  
MM +5.4  
MWW +25.4

A number three batsman needs all the qualities of an opener and all the grace of a true master. In this bull we have the cream of PRR. Homozygous polled, fantastic pedigree, pre-potent and a proven sire. This bull is destined for great things.

## WC0062C Wisp Will Enos (Vice Captain)

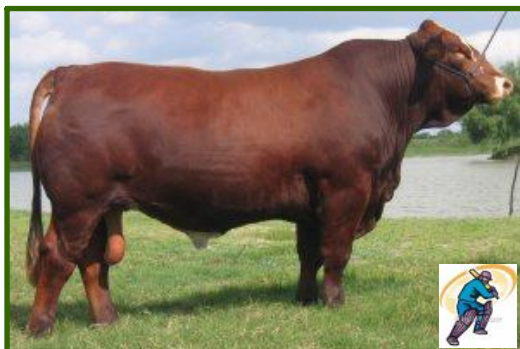


### Stats

B.M. +1.1  
200 +10  
400+ 14  
600 +25  
Milk +4

Traditionally your best batsman occupies the No 4 position. You need a true master and in this bull we have all those qualities. Enos is our highest revenue earner selling sons such as Zorro, Socrates, Enoc and Plato. A worthy No 4

## LMC RFI Smith Red Bullet



### Stats

B.M. +1.8  
WW+31.6  
YW+ 61.5  
MM +5.4  
MWW +21.2

Your No 5 batsman is your last recognised batsman and usually has to bat with the tail-enders and finish the innings off with style. Red Bullet has produced countless champs such as Nat Champ LM No Limit. Red Bullet is the sire of LMC Patriot and LMC Suave.

## PRR Perfection (P)(Wicket Keeper)



### Stats

B.M. +3  
WW+24.6  
YW+ 41.2  
MM +1.2  
MWW +13.5

A modern keeper must be an all-rounder and this bull is no exception. Beautifully bred, correct and polled. This bull has cracker calves at Excelsus. For use on all types.

For all statistics, pictures of calves, and additional information visit  
[www.excelsuslandgoed.co.za](http://www.excelsuslandgoed.co.za)

For corrective breeding and to breed the true Simbra type cash into the rich vein of form of the  
**Excelsus First Eleven**

# Excelsus First Eleven; Bowlers



## Salerika UG0746 (P)



**Stats**  
 B.M. +2.1  
 200 +34  
 400+ 56  
 600 +72  
 Milk +6



Another Super Star performer bred by master Simmentaler breeder Jan Hattling. Excelsus have used this bull as a FIX IT bull to correct problems on F1 cows and to breed a new F1 line from our Manso Cows. A true all-rounder.

## PRR Pioneer (H)



**Stats**  
 B.M. +0.7  
 WW+13.7  
 YW+ 22.3  
 MM -0.7  
 MWW +6.2



Pioneer was the leading Herd Sire at Pine Ridge for years and now is doing duty at Dick Hornback's DBR Ranch. We have used him to spin some magic into our breeding program. A true genetic spin wizard.

## PRR Papa (P)



**Stats**  
 B.M. +4.8  
 WW+29.9  
 YW+ 54.2  
 MM +0.2  
 MWW +15.1



This is the team rookie of our genetic eleven as the only bull not to have any progeny on the ground this year. Papa has come highly recommended by Bill Travis and is used as a tear away fast bowler in our program

## WC0270 Wisp Will Zane (P)



**Stats**  
 B.M. +0.3  
 200 +19  
 400+ 33  
 600 +42  
 Milk +1



To add variation to our bowling attack we purchased Zane to bolster our seam bowlers. Zane comes with a huge reputation and carries tremendous muscling and mobility. Zane is a typical seam bowler that can bat with explosive results

## MPB05127C Four Feet Naas (H)



**Stats**  
 B.M. +0.8  
 200 +11  
 400+ 18  
 600 +23  
 Milk +4



One of the stars of The Event 2 2009. Naas has weighed in with some fantastic calves in 2010. Dark red, muscled Naas can lead any genetic attack. Congratulations to Malemba Simbras for purchasing this fine bull.

## Smith James Outlaw (P)



**Stats**  
 B.M. +0.8  
 WW+50.5  
 YW+ 79.5  
 MM -5  
 MWW +20.3

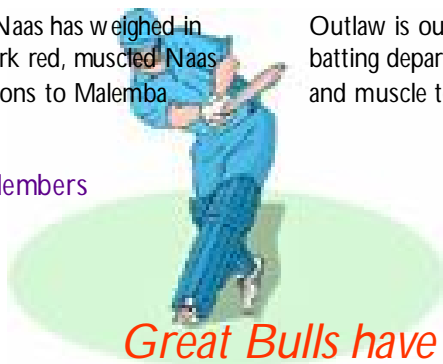


Outlaw is our "super-sub" covering both the bowling and batting departments. Outlaw shows tremendous growth, length and muscle to make for the perfect 12th man.

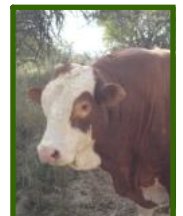


### Additional Squad Members

- Kamab Flipside
- Diana's Zander (P)
- Diana's Dynamite



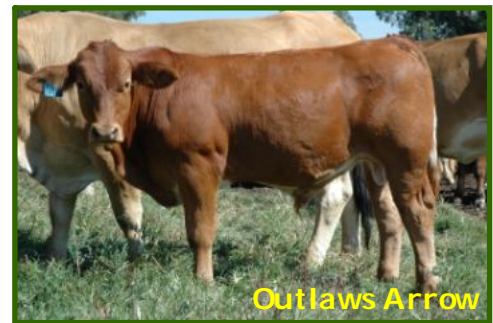
**Great Bulls have Great Dams!!**



## *Cross the River for Outstanding Genetics- Excelsus Landgoed*



## *La Muneca Patriot and Smith James Outlaw breed bulls*



Exciting times at Excelsus! Our AI program is realising results with the imported bulls leading the charge. Patriot keeps breeding show-quality heifers such as La Emma, La Carol, La Penny and bulls such as El Maestro, El Mexico, El Patriot, El Guerra and the class El Pancho. Pancho is a maternal sibling of Fanta 2nd, the 2007 Windhoek Res Calf Champion out of the old show stalwart Fanta. He is a grandson to the great Metsibra Bull UDM9453B who bred the most fantastic females. Hennie De Lange always maintains that the next great Metsibra stud bull will come from one of the great bull's daughters. Pancho is a hard, correct bull with a great dam line.

Smith James Outlaw's Arrow is another bull cut from the same mould. Bred out of a champion polled bull in Outlaw he is a product of the Echo lines from Echo 2, a Tingeling daughter. The Echo line is probably our most prolific show line with Echo 3 winning many championships. Echo 4 also featured in the show arena's. All four Echo's have fantastic calves this year with Grand Dam Echo PJF094A breeding a cracker calf from the Salerika Poll Bull UG0746, Echo 3 with La Emma another Patriot show prospect and Echo 4 with a top bull calf.

## Future Stars, Carefully Bred for the Stud Industry



**Prevail's Prodigy (P)**



**Pioneer's Pilgrim**

### Great Cows + Great Bulls + a Comprehensive Breeding Plan = Fantastic Calves



**Prevail's Pepper (P)**

A simple formula combined with hard work and a love for cattle will reap dividends. The Pine Ridge cattle breed true to type and this means that they will breed dark red, white blazed uniform calves. We have tried to use what we call our "Bullen Moeders" i.e those cows capable of breeding a stud bull more often than not to the imported lines.

Prevails Prodigy is bred out of our Kit lines from Kit 2nd, a beautiful polled Vegkop daughter. She is also the dam of Etiket, an Enos bred star. Grand dam Kit is one of our most beautiful Cows and has a Patriot calf with her this year.



**Prevail's Fan (P)**

Pioneer Pilgrim is out of a homebred line that we call Qik and has a maternal sister in the Patriot bred heifer La Qik.

Prevails Pepper is from a deep long Langman bred F4 cow Pippa 2 who has been on the fringes of the show strings and has an Enos half-sister Pips and the Platinum half-brother Peri Peri.

Prevails Fan is bred from possibly the deepest cow on the farm, another Metsibra daughter called Fan. Last year her Mcix daughter was one of the cover photos used in the Bulletins.



**Pioneer's Charity (P)**

Pioneers Penny is a maternal half-sister to the Patriot bred La Penny from the old GJS lines.

Prevails Pacific is our stud bull Challis' half-brother. His Dam is yet another Metsibra UDM9453B daughter and is dam of our Tac lines.

Our Langman bred daughter Ice is one phenomenal cow, breeding the Enos daughter Icy, the line bred stud bull prospect Amigo and now with a perfect bull calf aptly named Excelsus Perfection. Look carefully at the river crossing on page 4 and you will see this brave calf swimming behind his dam across the river at our Roodepoortjie Farm.



**Prevail's Pacific (P)**



**Reach for the Stars:  
Excelsus Landgoed**



**Perfection (P)**

## Simbra: The Perfect Beef Machine



## Galen's First Calf Crop Impresses!



Galen makes a dramatic improvement on this Heifer



### **This bull just keeps on coming!**

Not only has he shown well but he has passed his first breeding test providing Excelsus with a prize crop of calves. Galen was mated only to heifers and it is rare for a bull to breed such quality from such a wide variety of genetics. Congratulations to all those breeders that spotted this bull early and used his semen.

This bull looks to be a "keeper"



## Engineering the Perfect Simbra

### Multiple Traits for Simbrah

1. Fertility—Heifers to calve at two years of age and cows at twelve month intervals
2. Low birth weight and calving ease
3. High growth
4. Carcass tenderness and choice beef
5. Small head, moderate bone to achieve 65% red meat
6. A 1,350 pound steer at 13.5 months of age with low grain to weight ratio
7. Environmental cattle to prosper on the grasslands of the warmer climates of the world
8. Multigenerational cattle for breeding predictability and consistency of type
9. Heat traits
  - A. Dark hide
  - B. Red Hair
  - C. No naval leather, with neck leather for heat dissipation
  - D. Minimum of 1/4 Brahman
10. Structure
  - A. Female structure—frame score 6 to 7
  - B. Bull structure—frame score 6 to 8
  - C. Structurally correct; free moving
  - D. Gentle, non-kicking cattle
  - E. Shoulder height to brisket is equidistant to brisket to ground but not over a 55/45 ratio
  - F. Large scrotums, early maturing
  - G. High to moderate milking females with excellent teats and bag structure
  - H. Deep twist with flank as deep as chest wall
  - I. Longevity
  - J. Polled
  - K. White on face for ease in location of livestock
  - L. Pigmented eyes for protection from sun
  - M. Long, strong, wide and straight-backed, with small hook to pin slope and long tail set
  - N. Heavy muscling in rear quarter and over the loin



**Excelsus: Using the best systems world wide to produce and market the very best genetics for the South African Producer**

Excelsus Genetics  
15 February 2010

## The Back Page

### Cover Girls

Roodepoortjie Farm  
P.O Box 60  
Oranjeville  
1995

Phone: Graeme Currin +27 82 893 8147  
E-mail: excelsusmc@mweb.co.za



La Carol. A Patriot  
heifer from a Futuristic  
Daughter

Karen and Julie 2 a Platinum and an Enos daughter look on.

[www.excelsuslandgoed.co.za](http://www.excelsuslandgoed.co.za)

Your Gateway to International Genetics



Rohri : Red Bullet  
Daughter



Shiraz bred from Smith Sergeant  
and the Ru Dev Jim bred cow  
Stumpless

### UG0746 (P) One for the Ladies



New Polled Genetics from the famous Salerika Simmentaler  
Stud of Jan Hatting for our F1 breeding program.



Excelsus Up and Coming Events  
30 April 2010; Out of Hand Bulls and Cows Available  
Thursday 19 August; The Event 3 2010



ROCK HARD